

# Voice Alarm

## Audio Management Systems Security Solutions

certified to EN 54



# EVA Audio-Management System, *certified to EN 54-16*

## EVA 16 2.0 EN Audio-Management

EVA 16 2.0 EN is the logical development of the successful voice alarm compact system EVA 16 M/S EN certified to EN 54-16. The excellent feature of EVA 16 2.0 EN is a front mounted 4.5" color-touch panel. In addition, a real time clock and an extensive event/error logging has been integrated. A built-in monitor speakers replaced a possibly needed monitor control Panel.

EVA 16 2.0 EN is an innovative public address and voice alarm system. It can be used as master for single projects – as well as master/slave for more complex projects – cascadable up to 10 systems (1 Master/9 Slaves).

EVA 16 2.0 EN manages the signal and message diffusion and monitors the emergency microphones, the stored emergency and evacuation announcements also all connected amplifiers included spare amplifier, all the relevant security signal paths and all the connected EVA 16 2.0 EN (Slaves). In addition, EVA 16 2.0 EN monitors the connected power amplifiers and any existing emergency power supply. EVA 16 2.0 EN has a monitored interface for connection to NSC Fire Control Panels (VDE 0833-4).

Order No.: S01100-20



### EVA 16 system can be managed the following modules or systems:

- 4 audio inputs with separate level control for any AF output
- Up to 16 loudspeaker-lines (8 a/b), continuously monitoring for disconnection, impedance variation, short circuits and ground failures.
- 2 additional audio inputs (AUX) with separate level control, demand over contacts (switching to ground), for any AF output (e.g. commercial).
- 4 balanced AF outputs (plus one for the spare amplifier) – each with volume, treble and bass control – to control the power amplifier.
- 4 AF outputs, which are supplied simultaneously, each with different audio sources.
- Up to 8 addressable microphone units, Order No.: S01200-00 (monitored) or S01200-01 (monitored in partial functions) and/or Order No.: S01230-00/S01230-01/S01240-00/S01250-00 (not monitored) for up to 80 call zones
- 2 monitored fire microphones, Order No.: S01210-00/S01220-00
- Unlimited number of call stations from type S01230-00/S01240-00
- 4 monitored request contact lines for evacuation announcements
- 2 additional text spaces for common information that can be started from a contact (switching to ground).
- 1 space e.g. for a pause gong with separate level control for every NF output, that can be also started from a contact.
- Texts are stored on SD card in .mp3 size; the player module and signal paths are continuously monitored.

CE-Certificate: 1438-CPR-0463

## EVALINE 2.0 EN Line extension module

Speaker circuit extension in combination with EVA 16 2.0 EN. Here EVALINE 2.0 EN constantly monitors the connected power amplifiers and their speaker lines.

Using state-of-the-art DSP technology, future improvements can be implemented easily and at a low cost through software updates (over the PC interface). The central unit recognizes all connected components during its automatic installation sequence. In this case all recognized components are listed in the display. After completion of the installation sequence

all these indexed components are permanently monitored for faultless function. Any faults will result in corresponding error messages on the connected error message displays.

EVALINE 2.0 EN, for example in connection with the EVA 16 2.0 EN System, is used in schools, supermarkets, factories, office buildings, hotels and many more public buildings.

CE-Certificate: 1438-CPR-0463

Order No.: S01150-00



## SINUS 100 V-Class D-Multichannel amplifier, certified to EN 54-16

New to the program are multichannel power amplifiers in Class D-Technology.

High efficiency and performance in a small housing:

- |                  |   |                                       |
|------------------|---|---------------------------------------|
| <b>S02420-00</b> | SINUS 410 D – 4 x 120 Watts/100 V, EN 54-16 | Dimensions: 485 x 66 x 425 mm (1,5 U) |
| <b>S02440-00</b> | SINUS 420 D – 4 x 240 Watts/100 V, EN 54-16 |                                       |
| <b>S02450-00</b> | SINUS 450 D – 4 x 480 Watts/100 V, EN 54-16 | CE-Certificate: 1438-CPR-0463         |



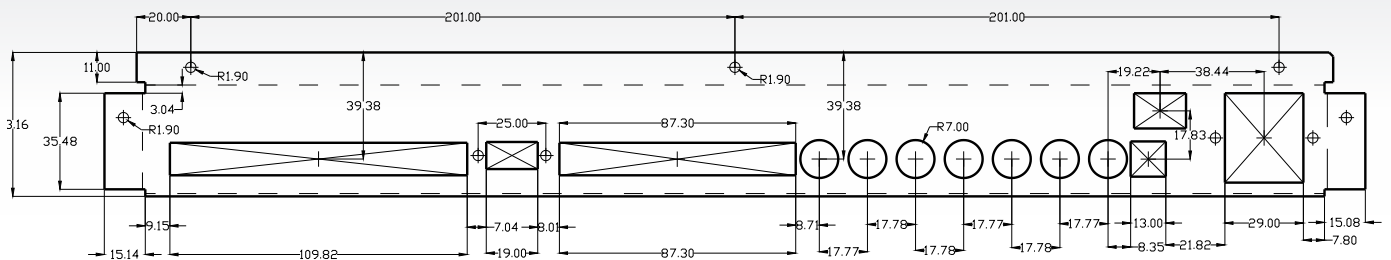
# EVA Audio-Management System, *certified to EN 54-16*

## EVA 8 EN Audio-Management

EVA 8 EN is an innovative compact public address and voice alarm system. EVA 8 EN manages the signal and message diffusion and monitors the emergency microphones, the stored emergency and evacuation announcements, also the connected amplifiers included spare amplifier, also all the relevant security signal paths and communicates with possibly installed UPS units to control by switching off or over not required components. Furthermore, EVA 8 EN permanently monitors the connected loudspeaker lines for interruptions, impedance deviations,

short circuits and ground faults. EVA 8 EN has been developed from a practical point of view for the needs and an easy use in public buildings, where a lot of people may have to be evacuated, such as shopping centers, administrative buildings, industrial facilities, railway stations, airports, schools and hotels.

Monitored interface for connection to NSC-Fire Control Panels.



### EVA 8 EN system can be managed the following modules or systems:

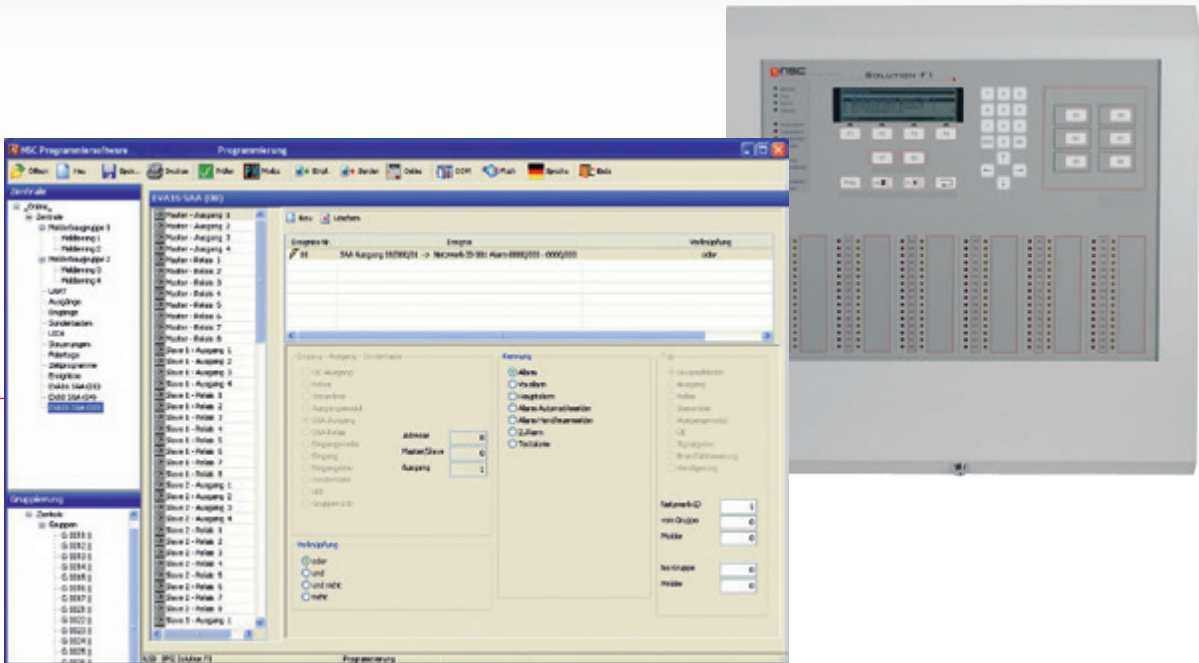
- 1 audio input with separate level control for any AF output
- Up to 8 loudspeaker-lines (4 a/b), continuously monitoring for disconnection, impedance variation, short circuits and ground failures.
- 1 additional audio input (AUX) with separate level control, demand over contacts, (switching to ground), for any AF output (e.g. commercial).
- 4 balanced AF outputs (plus one for the spare amplifier) – each with volume, treble and bass control – to control the power amplifier
- 4 AF outputs, which are supplied simultaneously, each with different audio sources.
- 2 monitored fire microphones
- Unlimited number of call stations of the type S01230-00/S01240-00
- 4 monitored request contact lines for evacuation announcements
- 1 additional text space for common information that can be started from a contact (switching to ground)
- Texts are stored on SD/MMC card in .mp3 size; the player module and signal paths are continuously monitored.

CE-Certificate: 1438-CPD-0235

Order No.: S01000-00



## Interfaces and Software



The EVA Audio-Management System offers an exclusive interface to the NSC-fire alarm system. It is programmable via the NSC-programming tool.





# ■ SINUS Power Amplifier – 100 V-Technology

## SINUS Power Amplifier – 100 V-Technology, certified to EN 54-16

### SINUS 40

- 1 x 480 W – 100 V-Technology
- Functional 480 W electro-acoustic power amplifier for professional electro-acoustic applications with 24 V DC emergency power input.
- The power switch is located at the back of the power amplifier to prevent accidental turning off.
- CE-Certificate: 1438-CPR-0463



Order No.: S02040-00

### SINUS 20

- 1 x 240 W – 100 V-Technology
- Functional 240 W electro-acoustic power amplifier for professional electro-acoustic applications with 24 V DC emergency power input.
- The power switch is located at the back of the power amplifier to prevent accidental turning off.
- CE-Certificate: 1438-CPR-0463



Order No.: S02020-00

### SINUS 10

- 1 x 120 W – 100 V-Technology
- Functional 120 W electro-acoustic power amplifier for professional electro-acoustic applications with 24 V DC emergency power input.
- The power switch is located at the back of the power amplifier to prevent accidental turning off.
- CE-Certificate: 1438-CPR-0463



Order No.: S02010-00

### SINUS 410

- 4 x 120 W – 100 V-Technology
- Functional 4 x 120 W electro-acoustic power amplifier for professional electro-acoustic applications with 24 V DC emergency power input.
- The power switch is located at the back of the power amplifier to prevent accidental turning off.
- The power amplifier has 4 independent primary power supplies.
- CE-Certificate: 1438-CPR-0463



Order No.: S02060-00

### SINUS 220

- 2 x 240 W – 100 V-Technology
- Functional 2 x 240 W electro-acoustic power amplifier for professional electro-acoustic applications with 24 V DC emergency power input.
- The power switch is located at the back of the power amplifier to prevent accidental turning off.
- The power amplifier has 2 independent primary power supplies.
- CE-Certificate: 1438-CPR-0463



Order No.: S02060-01

## Extensive accessories for EVA-System

### EVA 16 TER Call Station

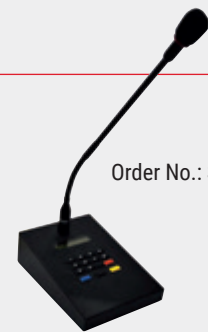
- Certified to EN 54-16
- Monitored, microprocessor-controlled call station to connect to EVA 16 M EN for announcements in up to 80 selectable loudspeaker zones
- Built-in LC display for monitoring each operating status
- Separate emergency button. Operator-specific programming for: individual group, collective, and emergency announcements with the associated priority levels
- Covert button for alarm, house clearance, music: on/off
- Volume control for announcements



Order No.: S01200-00

### EVA 16 SYS 8/EVA 16 SYS 80 Call Station

- Microprocessor-controlled call station to connect to EVA 16 M EN for announcements in up to 80 selectable loudspeaker zones
- Built-in LC display for monitoring each operating status



Order No.: S01200-01

### EVA 16 FIREPANEL in Metal Housing for EVA 16 M/S EN

- Certified to EN 54-16
- EVA 16 FIREPANEL in lockable metal enclosure with viewing window, optical design
- Alarm buttons for 4 zones
- Alarm stop for 4 zones
- Combined test- and buzzer-off button
- 6 x 24 V inputs for connection, from BMZ
- Dynamic handheld microphone with spiral cable and talk switch
- Incl. fault-LED
- Fixed connection via cable installation 4 x 2 x 0,8 mm



Order No.: S01255-00

### EVA SYS FH Handheld Microphone for emergency announcements

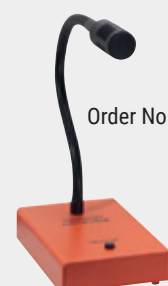
- Certified to EN 54-16
- Ergonomic and functional monitored handheld microphone for emergency announcements (Fire Mic) with steel mounting bracket Clip
- For EVA 16 M/S EN and EVA 8 EN



Order No.: S01220-00

### EVA SYS FT Desktop Microphone for emergency announcements

- Certified to EN 54-16
- Monitored Desktop Microphone for emergency announcements (Fire Mic)
- For EVA 16 M/S EN and EVA 8 EN



Order No.: S01210-00

## ■ Extensive accessories for EVA-System

### **EVA SYS 2 Call Station for EVA 16 M/S EN and EVA 8 EN**

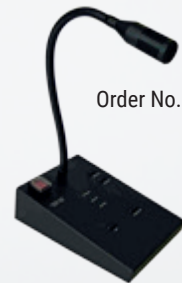
- Standard call station for EVA 16 M/S EN and EVA 8 EN with 2 call button and busy Indicator.
- You can connect unlimited number of EVA SYS 2 to the EVA system.



Order No.: S01230-00

### **EVA SYS 2 P Call Station for EVA 16 M/S EN and EVA 8 EN**

- Standard call station for EVA 16 M/S EN and EVA 8 EN with 2 call button and busy Indicator.
- With covered alarm button



Order No.: S01230-01

### **EVA SYS 4 Call Station for EVA 16 M/S EN and EVA 8 EN**

- Modern standard call station in a metal case for EVA 16 M/S EN and EVA 8 EN with programmable call button for 4 areas and busy indicator.



Order No.: S01240-00

### **EVA SYS K 4+1 Call Station for EVA 16 M/S EN and EVA 8 EN**

- Modern intercom system in plastic housing for EVA 16 M/S EN and EVA 8 EN with collective and programmable call button for 4 areas
- With smear resistant foil keypad and busy indicator



Order No.: S01250-00